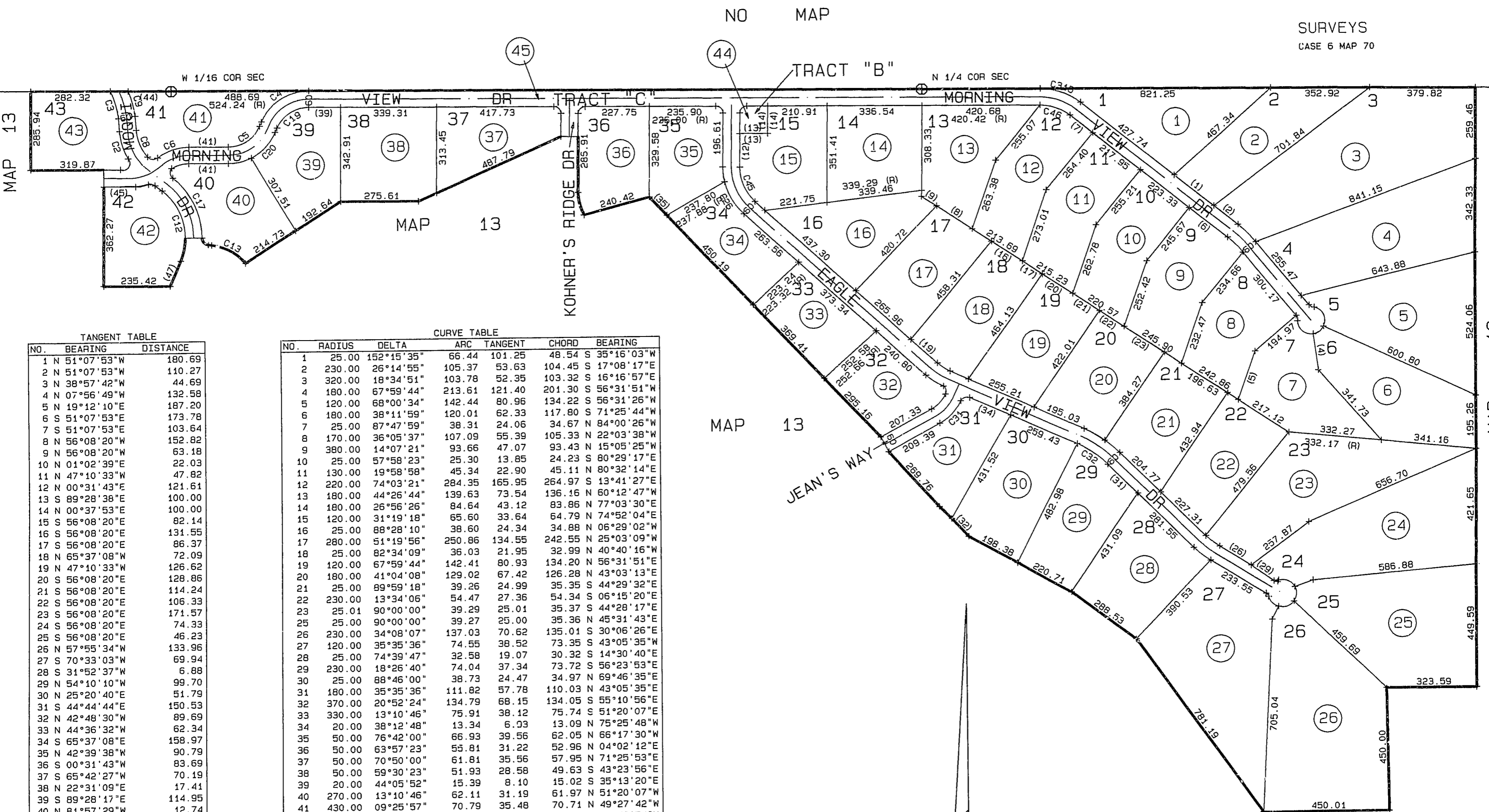


STARLIGHT PINES RANCHETTES UNIT 1

SECTION 7 T14N-12E

SURVEYS
CASE 6 MAP 70



TANGENT TABLE

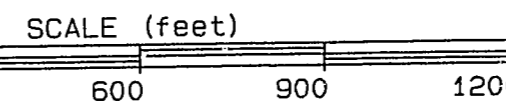
NO.	BEARING	DISTANCE
1	N 51°07'53"W	180.69
2	N 51°07'53"W	110.27
3	N 38°57'42"W	44.69
4	N 07°56'49"W	132.58
5	N 19°12'10"E	187.20
6	S 51°07'53"E	173.78
7	S 51°07'53"E	103.64
8	N 56°08'20"W	152.82
9	N 56°08'20"W	63.18
10	N 01°02'39"E	22.03
11	N 47°10'33"W	47.82
12	N 00°31'43"E	121.61
13	S 89°28'38"E	100.00
14	N 00°37'53"E	100.00
15	S 56°08'20"E	82.14
16	S 56°08'20"E	131.55
17	S 56°08'20"E	86.37
18	N 65°37'08"W	72.09
19	N 47°10'33"W	126.62
20	S 56°08'20"E	128.86
21	S 56°08'20"E	114.24
22	S 56°08'20"E	106.33
23	S 56°08'20"E	171.57
24	S 56°08'20"E	74.33
25	S 56°08'20"E	46.23
26	N 57°55'34"W	133.96
27	S 70°33'03"W	69.94
28	S 31°52'37"W	6.88
29	N 54°10'10"W	99.70
30	N 25°20'40"E	51.79
31	S 44°44'44"E	150.53
32	N 42°48'30"W	89.69
33	N 44°36'32"W	62.34
34	S 65°37'08"E	158.97
35	N 42°39'38"W	90.79
36	S 00°31'43"W	83.69
37	S 65°42'27"W	70.19
38	N 22°31'09"E	17.41
39	S 89°28'17"E	114.95
40	N 81°57'29"W	12.74
41	S 89°28'17"E	139.86
42	S 22°31'09"W	17.42
43	N 04°00'30"W	51.96
44	S 89°28'17"E	151.40
45	S 89°28'17"E	113.92
46	S 51°30'05"E	30.81
47	S 23°20'15"W	98.61
48	S 03°49'52"E	47.76
49	N 00°31'43"E	75.01
50	S 89°28'17"E	75.18

CURVE TABLE

NO.	RADIUS	DELTA	ARC	TANGENT	CHORD	BEARING
1	25.00	152°15'35"	66.44	101.25	48.54	S 35°16'03"W
2	230.00	26°14'55"	105.37	53.63	104.45	S 17°08'17"E
3	320.00	18°34'51"	103.78	52.35	103.32	S 16°16'57"E
4	180.00	67°59'44"	213.61	121.40	201.30	S 56°31'51"W
5	120.00	68°00'34"	142.44	80.96	134.22	S 56°31'26"W
6	180.00	38°11'59"	120.01	62.33	117.80	S 71°25'44"W
7	25.00	87°47'59"	38.31	24.06	34.67	N 84°00'26"W
8	170.00	36°05'37"	107.09	55.39	105.33	N 15°05'25"W
9	380.00	14°07'21"	93.66	47.07	93.43	N 22°03'38"W
10	25.00	57°58'23"	25.30	13.85	24.23	S 80°29'17"E
11	130.00	19°58'58"	45.34	22.90	45.11	N 80°32'14"E
12	220.00	74°03'21"	284.35	165.95	264.97	S 13°41'27"E
13	180.00	44°26'44"	139.63	73.54	136.16	N 60°12'47"W
14	180.00	26°56'26"	84.64	43.12	83.86	N 77°03'30"E
15	120.00	31°19'18"	65.60	33.64	64.79	N 74°52'04"E
16	25.00	88°28'10"	38.60	24.34	34.88	N 06°29'02"W
17	280.00	51°19'56"	250.86	134.55	242.55	N 25°03'09"W
18	25.00	82°34'09"	36.03	21.95	32.99	N 40°40'16"W
19	120.00	67°59'44"	142.41	80.93	134.20	N 56°31'51"E
20	180.00	41°04'08"	129.02	67.42	126.28	N 43°03'13"E
21	25.00	89°59'18"	39.26	24.99	35.35	S 44°29'32"E
22	230.00	13°34'06"	54.47	27.36	54.34	S 06°15'20"E
23	25.01	90°00'00"	39.29	25.01	35.37	S 44°28'17"E
24	25.00	90°00'00"	39.27	25.00	35.36	N 45°31'43"E
25	230.00	34°08'07"	137.03	70.62	135.01	S 30°06'26"E
26	120.00	35°35'36"	74.55	38.52	73.35	S 43°05'35"W
27	25.00	74°39'47"	32.58	19.07	30.32	S 14°30'40"E
28	230.00	18°26'40"	74.04	37.34	73.72	S 56°23'53"E
29	25.00	88°46'00"	38.73	24.47	34.97	N 69°46'35"E
30	180.00	35°35'36"	111.82	57.78	110.03	N 43°05'35"E
31	370.00	20°52'24"	134.79	68.15	134.05	S 55°10'56"E
32	330.00	13°10'46"	75.91	38.12	75.74	S 51°20'07"E
33	20.00	38°12'48"	13.34	6.03	13.09	N 75°25'48"W
34	50.00	76°42'00"	66.93	39.56	62.05	N 66°17'30"W
35	50.00	63°57'23"	55.81	31.22	52.96	N 04°02'12"E
36	50.00	70°50'00"	61.81	35.56	57.95	N 71°25'53"E
37	50.00	59°30'23"	51.93	28.58	49.63	S 43°23'56"E
38	20.00	44°05'52"	15.39	8.10	15.02	S 35°13'20"E
39	270.00	13°10'46"	62.11	31.19	61.97	N 51°20'07"W
40	430.00	09°25'57"	70.79	35.48	70.71	N 49°27'42"W
41	430.00	11°26'27"	85.86	43.07	85.72	N 59°53'54"W
42	170.00	18°26'40"	54.73	27.60	54.49	N 56°23'53"W
43	25.00	90°00'00"	39.27	25.00	35.36	N 45°31'43"E
44	170.00	47°42'13"	141.54	75.16	137.49	N 23°19'23"W
45	170.00	38°24'39"	113.97	59.22	111.85	S 70°20'14"E
46	370.00	12°10'13"	78.59	39.44	78.44	S 45°02'47"E
47	20.00	61°00'33"	21.30	11.78	20.30	N 66°10'37"W
48	50.00	102°30'02"	89.45	62.30	77.99	N 25°55'28"W
49	50.00	56°44'03"	49.51	27.00	47.51	N 53°41'35"E
50	50.00	97°11'43"	84.82	56.71	75.01	S 49°20'32"E
51	20.00	60°58'52"	21.29	11.78	20.30	S 11°44'28"E
52	430.00	12°10'13"	91.34	45.84	91.17	N 45°02'47"W
53	170.00	28°51'15"	85.61	43.73	84.71	N 13°54'08"W
301	230.00	38°24'39"	154.19	80.12	151.32	N 70°20'14"W

MAP 13

JEAN'S WAY



"FOR INFORMATION ONLY. NO LIABILITY ASSUMED"

COCONINO COUNTY ASSESSOR			
SCALE	1" = 300'		LAST REVISION
			10-17-96
TAX CODE	PARCELS	MARKET/SUB	PARCELS
0500			